

2130 HIGH-OUTPUT BROADCAST SPREADER

ASSEMBLY and OPERATING INSTRUCTIONS Rev. 3-10

EarthWay
HIGH-OUTPUT

PLEASE CALL IF YOU ARE MISSING ANY PARTS, HAVE ANY DIFFICULTY IN ASSEMBLY, OR HAVE ANY QUESTIONS REGARDING THE SAFE OPERATION OF THIS SPREADER. THIS MODEL INCLUDES **LIFETIME TECHNICAL SUPPORT** SUPPORT HOT LINE: 574-848-7491 or 800-294-0671, EMAIL: TECHSUPPORT@EARTHWAY.COM SKYPE: EARTHWAY.TECH

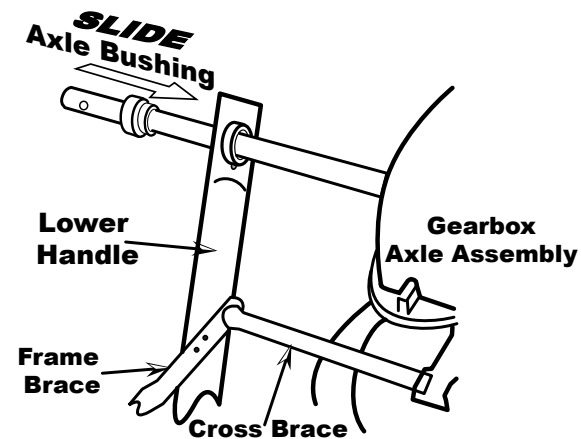
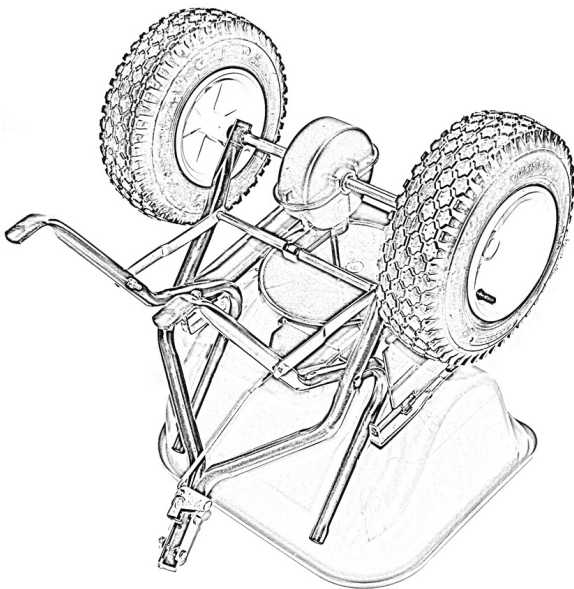
HELPFUL HINTS: READ THE DIRECTIONS BEFORE ASSEMBLY

THIS SPREADER COMES PARTIALLY ASSEMBLED, REQUIRING YOU TO INSTALL THE WHEELS, HANDLE ASSEMBLY AND CONTROL ROD. IT SHOULD TAKE APPROXIMATELY 10 MINUTES WITH THE USE OF TWO 7/16" WRENCHES AND 1 PAIR OF PLIERS.

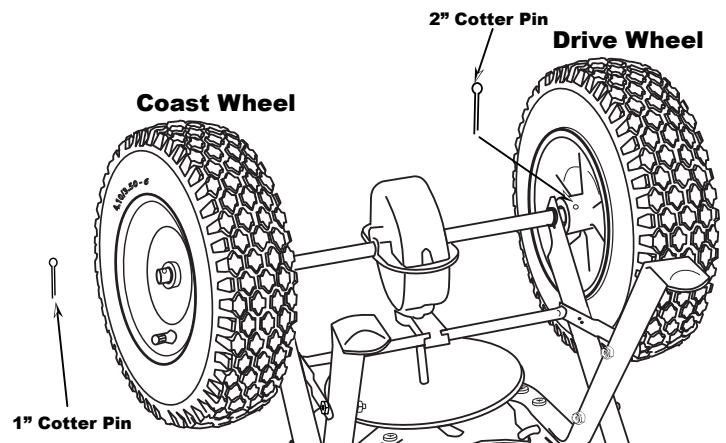
- ☑ Clean the impeller plate after each use. Material stuck on the impeller blades will cause uneven spreading.
- ☑ Your spreader is designed to be pushed at three miles per hour, which is a brisk walking speed. Slower or faster speeds will change the spread patterns. Wet material will also change the spread pattern and flow rate.
- ☑ Clean your spreader thoroughly after each use. Wash between the shut off plate and bottom of the hopper.
- ☑ Gears are permanently lubricated at the factory. Do not open the gearbox or dirt may enter.
- ☑ When using Rock Salt remove salt from the hopper daily. Rock Salt will reconstitute back into a solid block over night with humidity. As a preventative measure, spray all metal parts thoroughly (inside the tubing too) with WD-40 to prevent corrosion.

1. Open carton and remove the handle assembly, wheels, and spreader from carton.

2. Turn spreader upside-down on to the hopper.

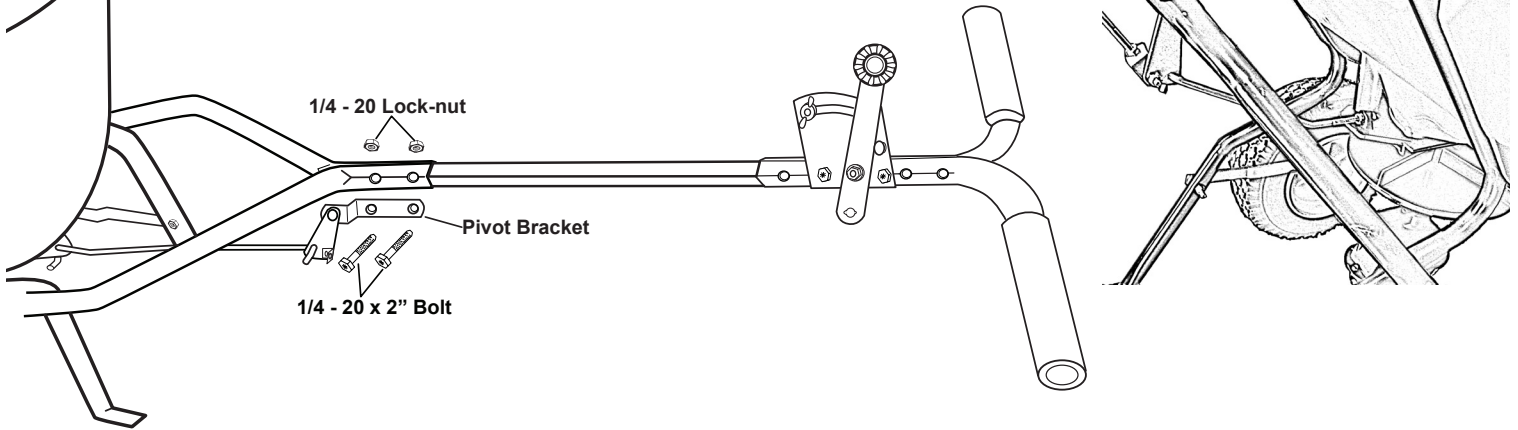


3. Ensure that the axle bearings are pushed into the axle bushing on both sides as shown. Install drive wheel (both wheels are interchangeable) to axle using pin hole nearest to lower handles as shown. Insert 2" cotter pin through wheel and through axle. Bend with pliers to prevent pin from falling out.



4. Install coast wheel to axle, then using outside pin hole as shown, insert 1" cotter pin through axle (not thru the wheel). Bend with pliers to prevent pin from falling out.

5. Install handle shaft to lower handles and pivot & bracket assembly as shown. Using 2" bolts and locknuts.
TIGHTEN BOLTS AND NUTS NOW.



6. (This step is only required if you want to change the position of the handles) **NOTE: BEFORE INSTALLING GAUGE AND UPPER HANDLES TO HANDLE SHAFT, UPPER HANDLES FEATURE THREE POSITIONS FOR OPERATOR'S COMFORT.**

If operator chooses middle or upper positions, use handle spacer in hole nearest to handle grips.

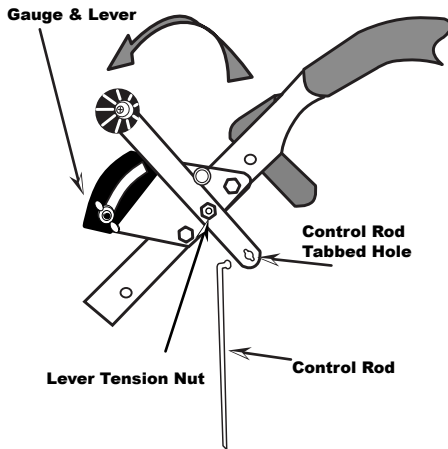
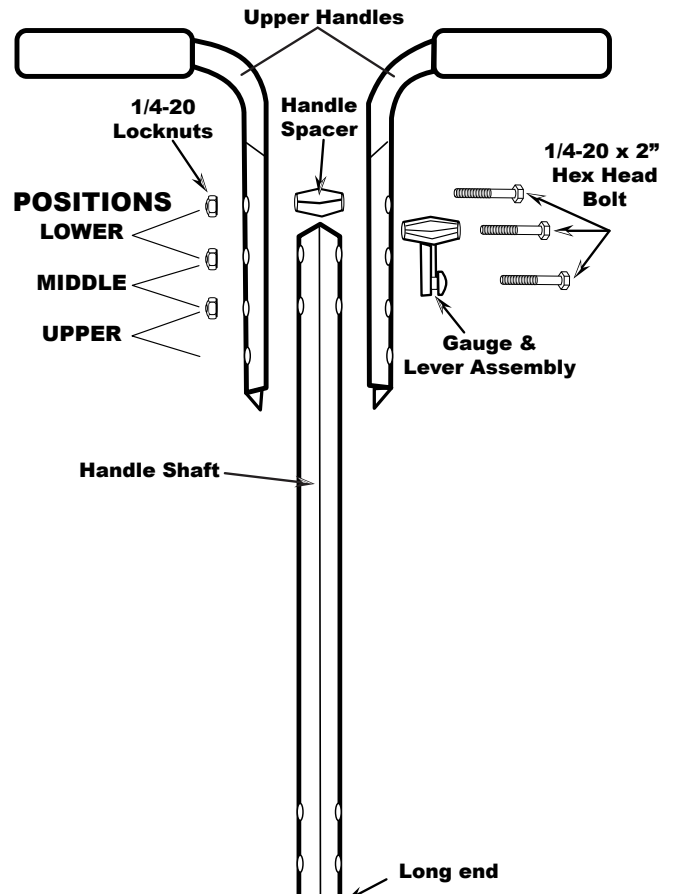
Insert 2" bolt through upper handle, then through handle spacer through other upper handle and secure with locknut.

DO NOT TIGHTEN LOCKNUT YET. TIGHTEN THIS NUT LAST.

Now slide the **UPPER HANDLE** assembly over the **HANDLE SHAFT** (*on the end with the bolt holes closer to the end*).

Install gauge & lever using (2) 2" bolts. Be sure gauge is on left hand side. Tighten locknuts to gauge first.

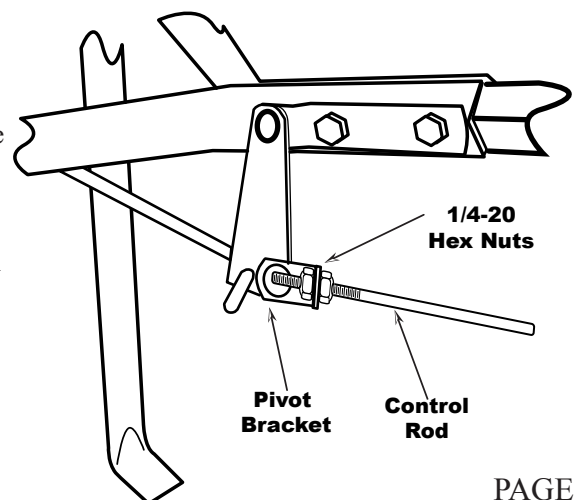
TIGHTEN ALL HARDWARE NOW.



7. Install Control Rod by installing flattened end of Control Rod into Lever on Gauge as shown. Turn to lock in place. *{Make sure that there is a plain 1/4-20 Hex Nut threaded about halfway up the threads}*

Push lever forward to full OPEN setting. Align and push the Control Rod through the angle attached to the Pivot Bracket. Now install 1/4-20 regular nut on to control rod. *{One nut on either side of the angled plate}*

Next pull pivot & bracket back so that the shut off plate in the hopper is in the full open position and adjust the Hex Nuts on the Pivot Bracket angle to secure the angled bracket. Now tighten the nuts against the pivot angled bracket to prevent change in calibration.



5-YEAR LIMITED WARRANTY

EarthWay Products, Inc. warrants this product free of defects in original workmanship and materials for a period of 5-Years to the end user with the original purchase receipt. If a manufacturing non-conformance is found, **EarthWay** Products, Inc. at its discretion will repair or replace the part(s) or product at no charge provided the failure is not the result of incorrect installation, mishandling, misuse, tampering, or normal wear and tear as determined by **EarthWay**. **EarthWay** at its discretion may require that the part(s) or product be returned along with the original purchase receipt at owners' expense for examination and compliance with the terms of this warranty. (Do not return any product without first receiving authorization from **EarthWay** Products, Inc.). To seek remedy under this warranty, contact **EarthWay** Products, Inc. at 574-848-7491, techsupport@earthway.com or write to (**EarthWay** Products, Inc. P.O. Box 547 Bristol, Indiana 46507) and describe the nature of the manufacturing defect. SPECIFIC LIMITATIONS: This warranty covers only the part(s) or product; any labor charges associated with repair or replacement of non-conformances are specifically excluded. Due to the corrosive nature of most fertilizers and ice melt products, **EarthWay** Products, Inc. makes no warranty against and specifically excludes part(s) or product degradation or failure due to corrosion or its effects. Clean and dry your spreader thoroughly after each use, as a preventative measure, coat all metal parts with a light oil or silicon spray.

HOW TO ORDER SPARE PARTS

All spare parts listed herein may be ordered direct from the manufacturer. Be sure to give the following information when ordering.

- ◀ Model Number
- ◀ Part Number
- ◀ Part Description

Call (574) 848-7491 or 800-294-0671 to place an order with a credit card.

OPERATING INSTRUCTIONS

Before filling hopper, become familiar with the operation of this spreader.

- Move stop bolt on gauge assembly to the proper position for the material being applied.
- While pushing spreader forward, push control lever forward to stop bolt.
- To stop, pull lever backward to close flow hole before you stop moving.
- When finished, empty any remaining material from hopper.
- Thoroughly wash and dry your spreader before storing.

DO NOT RETURN TO DEALER FOR REPAIR

EARTHWAY PRODUCTS, INC.

1009 Maple Street
P.O. Box 547
Bristol, IN 46507

FOR YOUR RECORDS

Date Purchased

Store Name

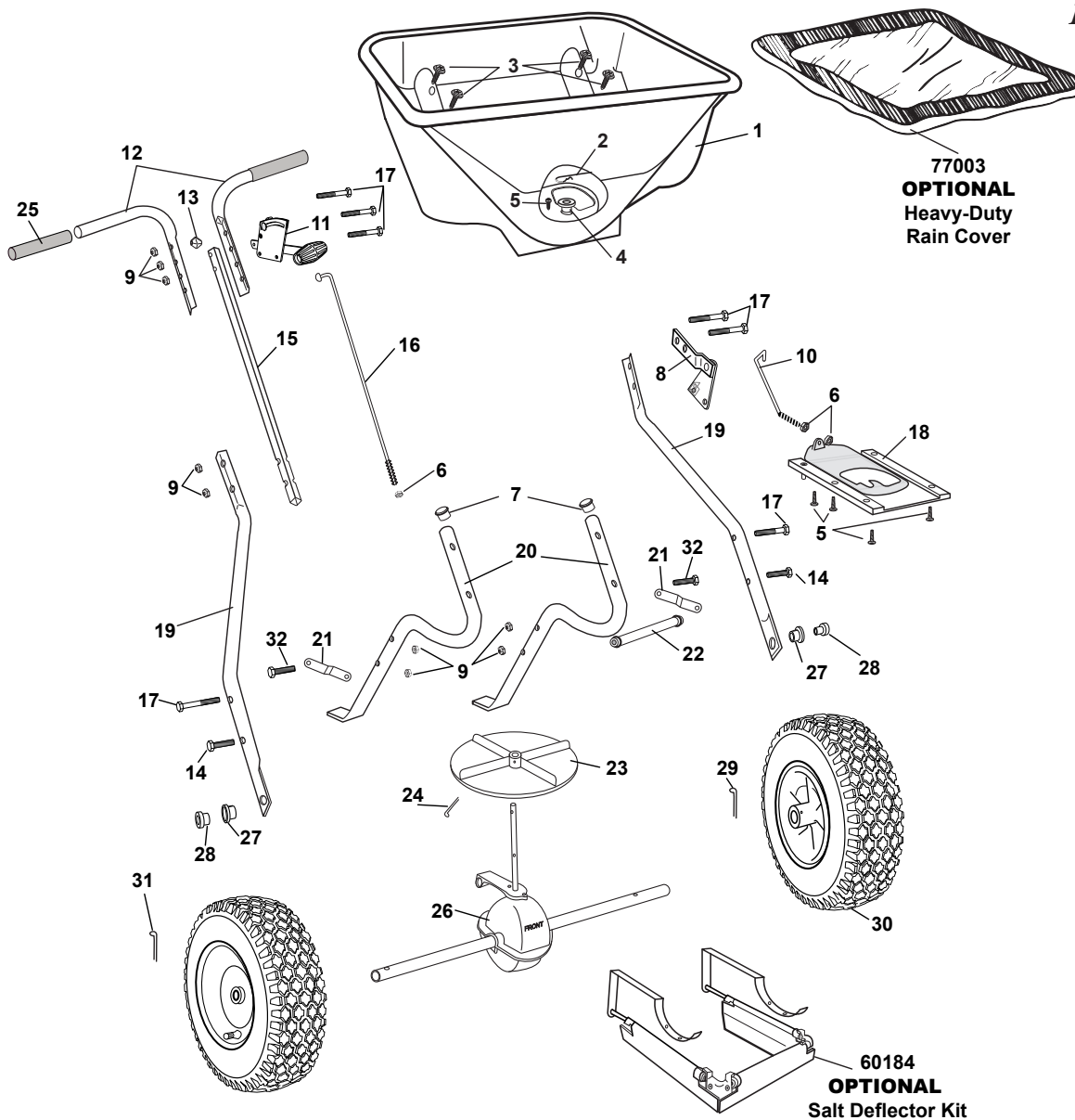
EarthWay Products, Inc.

P.O. Box 547

Bristol, IN 46507

Phone: 800-294-0671

www.earthway.com



77003
OPTIONAL
Heavy-Duty
Rain Cover

60184
OPTIONAL
Salt Deflector Kit

2130 HIGH-OUTPUT Broadcast Spreader ~ Parts List

KEY #	PART #	DESCRIPTION	KEY #	PART #	DESCRIPTION
1	60250	HOPPER ASSEMBLY	18	12354	ICE MELT SHUT-OFF
2	33117	AGITATOR	19	25222	LOWER HANDLE
3	31141	#14 X 3/4" TYPE "AB" HWHS ZINC	20	25722	FRAME
4	12259	HOPPER BUSHING	21	44292	FRAME BRACE
5	31122	#8 X 5/8" PPHS TYPE A BLACK	22	25228	CROSS BRACE
6	32100	1/4-20 HEX NUT ZINC	23	12109	IMPELLER (9" DIA)
7	19132	7/8" TUBE PLUG	24	36105	1/8" X 1 1/4" COTTER PIN SS
8	60300	PIVOT & BRACKET ASSEMBLY	25	12274	GRIP 7.5" LONG
9	32103	1/4-20 NYLON INS LOCKNUT ZINC	26	60334	GEAR BOX & AXLE ASSEMBLY
10	42259	LOWER CONTROL ROD	27	12148	AXLE BEARING
11	60499	GAUGE & LEVER	28	12152	AXLE BUSHING
12	60175	UPPER HANDLE SQ W/GRIP	29	33109	3/16" X 2" COTTER PIN ZINC
13	12344	HANDLE SPACER	30	70138	PNEUMATIC DRIVE/COAST WHEEL
14	31121	1/4-20 X 1 1/4" HHCS ZINC	31	33108	3/16" X 1" COTTER PIN ZINC
15	25223	HANDLE SHAFT	32	31114	1/4-20 X 1 3/4" HHCS ZINC
16	42256	CONTROL ROD	OPTIONAL	60184	SALT DEFLECTOR KIT
17	31120	1/4-20 X 2" HHCS ZINC	OPTIONAL	77003	HEAVY DUTY RAIN COVER 13" X 18"